

ph as /f/

ph

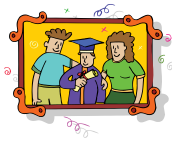
NAME: _____



The digraph **ph** makes the sound /f/ as in **photo**.
Trace the letters and say the word.



phone



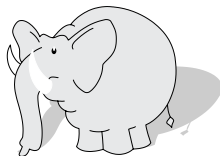
photo



pheasant



photographer



elephant



Read the sentences below. Circle words with **ph** or **f**.
Say the words again.



First, the photographer photographed
the pheasant. Then he photographed
the elephant. Finally, he phoned my
father to pick up the photos.

