

Long Sounds of y

y

NAME: _____

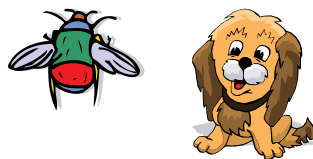


The letter **y** makes the long **e** sound as in **baby**. The letter **y** also makes the long **i** sound as in **cry**.

1. Use a **red crayon** to circle words with **y** as long **e**.
2. Use a **blue crayon** to circle words with **y** as long **i**.



The **baby** likes to **cry**.



The puppy can't fly.



It's sunny and dry.



My daddy can fry fish.

y as Long i

y

NAME: _____



Find and circle the words that end with **y**. Say the words. Fill in the blank spaces with the words.



Word Bank

cry
fry
fly
dry
sky
spy

1. The fox can spy through the keyhole.



2. The butterfly can _____.



3. Birds fly in the _____.



4. My father can _____ fish.



5. We _____ our clothes over the fire.



6. The baby likes to _____.



Long i with igh

igh

NAME: _____



The letters **igh** make the long vowel **i** sound as in **light**. Say and complete the words below.



light _____



kn _____



f _____



f _____



Read the sentence below and circle words that have **igh**.



A knight can fight at night.

Long i Matching

i

NAME: _____



Say the word. Write the correct letters that stand for the long vowel **i**.



wr _ _ t _ _



t _ m _



cr _ _



h _ v _



Draw a line. Match words with the same rhyme.



write

cry



dry

kite



price

dive



hive

mice



lime

time



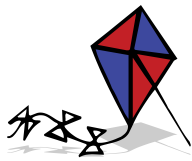
Long i Word Families

i

NAME: _____



Say the names of the pictures in each row. Put a cross on a picture if the word is not in the same word family.



kite



beet



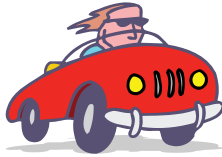
bite



write



dive



drive



five



wave



fire



sky



cry



fry



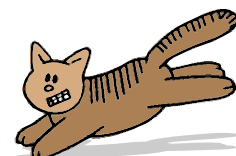
light



flight



fight



cat