

# Long Sounds of y

# y

NAME: \_\_\_\_\_

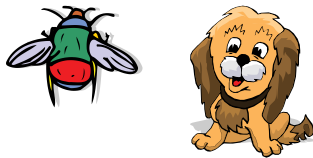


The letter **y** makes the long **e** sound as in **baby**. The letter **y** also makes the long **i** sound as in **cry**.

1. Use a **red crayon** to circle words with **y** as long **e**.
2. Use a **blue crayon** to circle words with **y** as long **i**.



The **baby** likes to **cry**.



The puppy can't fly.



It's sunny and dry.



My daddy can fry fish.